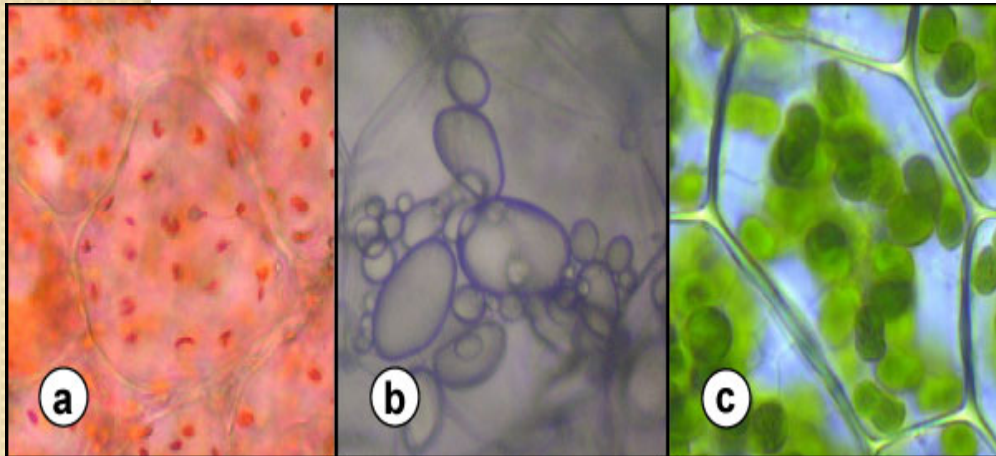
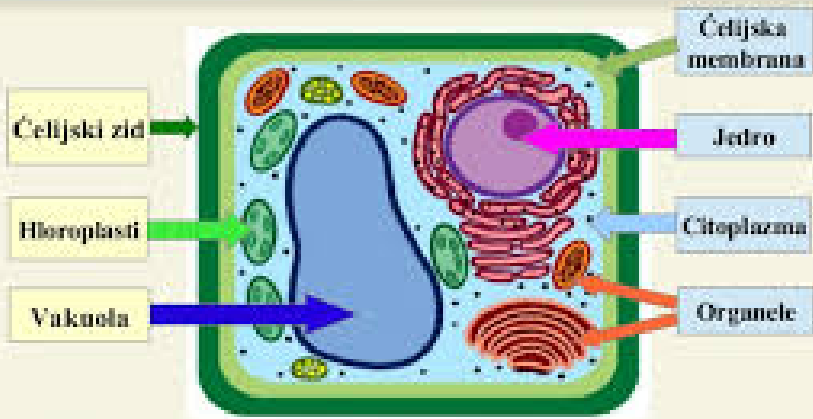


GRAĐA BILJNE ĆELIJE

Građa hloroplasta

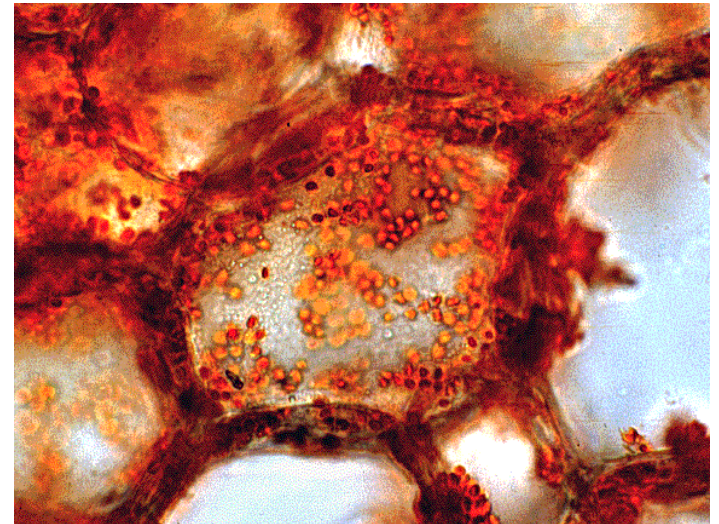
Građa biljne ćelije



hromoplasti

leukoplasti

hloroplasti

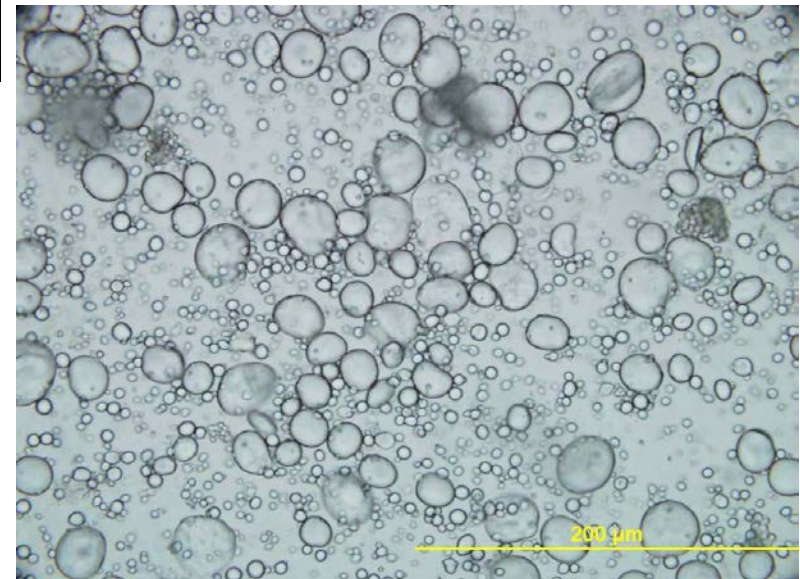
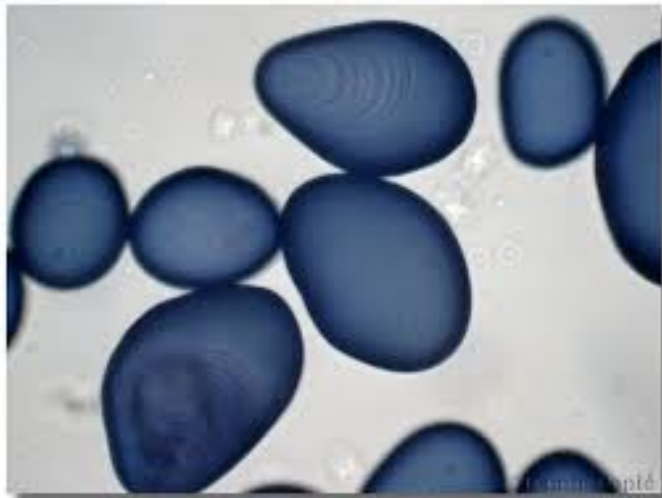
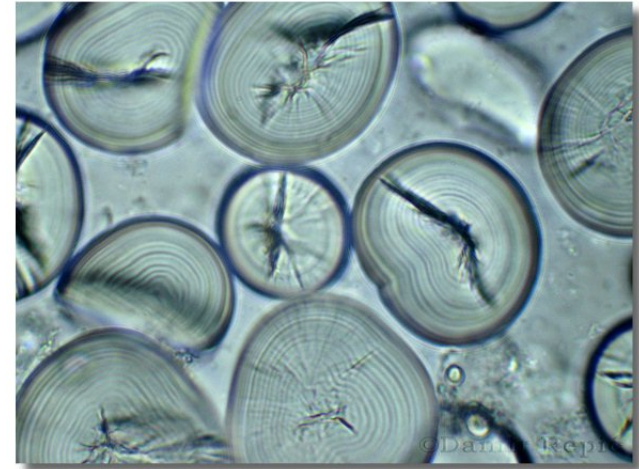
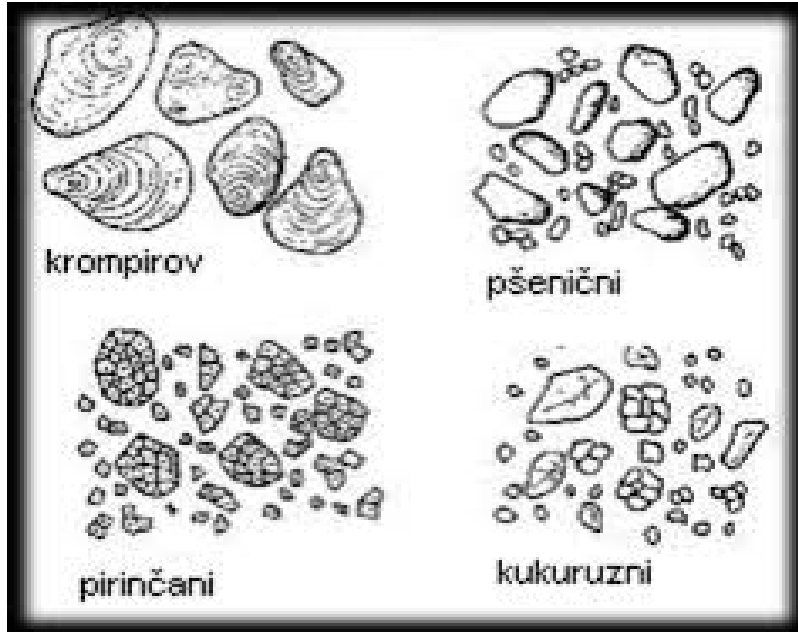


hromoplasti

	ANIMALNA ČELIJA	BILJNA ČELIJA
OBLIK	OKRUGLAST, NEPRAVILAN	PRAVOUGAONI
JEDRO	✓	✓
ČELIJSKI ZID	✗	✓
VAKUOLE	JEDNA ILI VIŠE MALIH VAKUOLA	JEDNA, VELIKA CENTRALNA VAKUOLA (ZAUZIMA 90% VOLUMENA ČELIJE)
CENTRIOLE	✓	✗
HLOROPLAST	✗	✓
PLASTIDI	✗	✓
LIZOZOMI	✓	RETKI
FLAGELE	MOGU SE NAĆI U NEKIM ČELIJAMA	MOGU SE NAĆI U NEKIM ČELIJAMA
CILIJE	✓	VEOMA RETKE
ER, MITOHONDRIJE, GOLDŽIJEV APARAT, RIBOZOMI	✓	✓

REZERVNE MATERIJE KOD BILJAKA

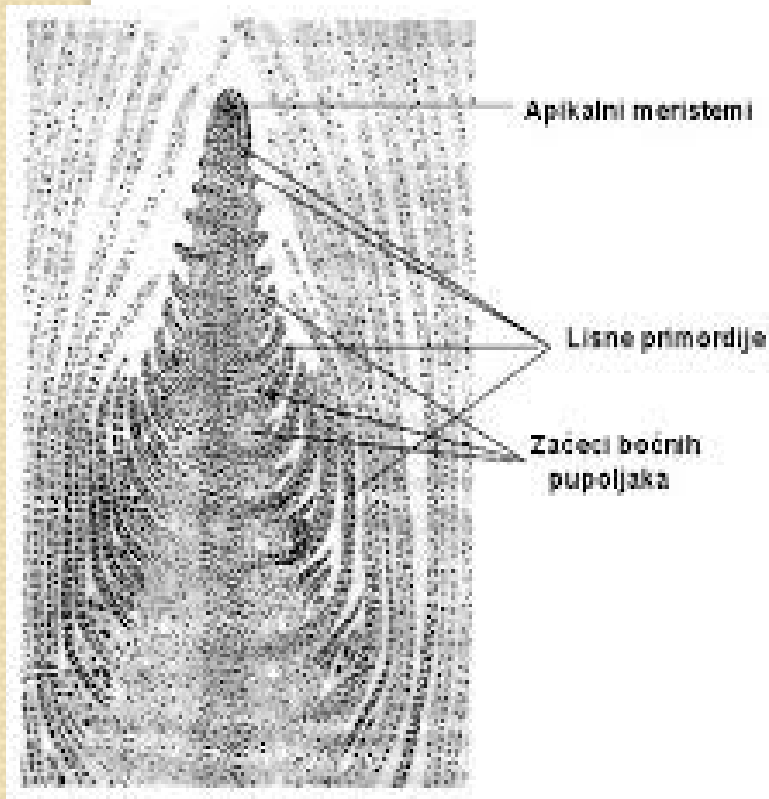
SKROBNA ZRNA



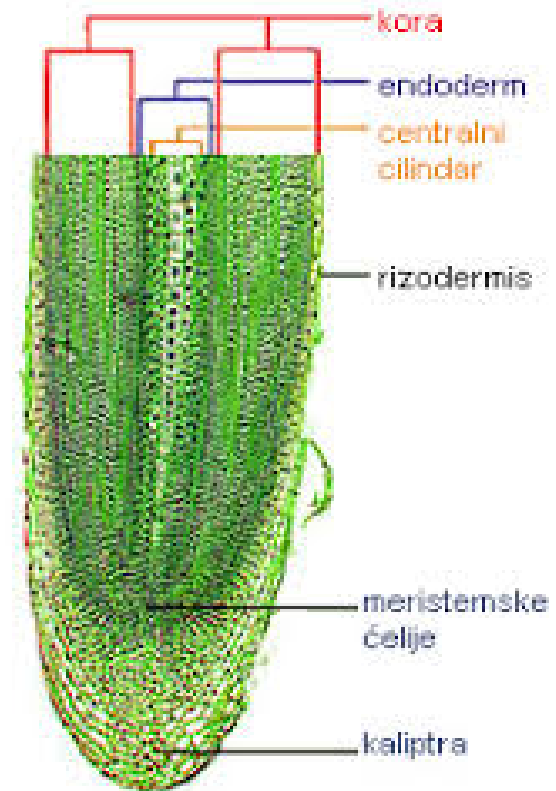
BILJNA TKIVA

Tvorna tkiva

(Vegetaciona kupa stabla i korijena)



Vegetaciona kupa stabla



Vegetaciona kupa korijena

Trajna tkiva

1. Pokorična
2. Parenhimska
3. Mehanička
4. Provodna
5. Sekretorna

Mehanička tkiva

Kolenhim, sklerenhim



Građa kolenhima



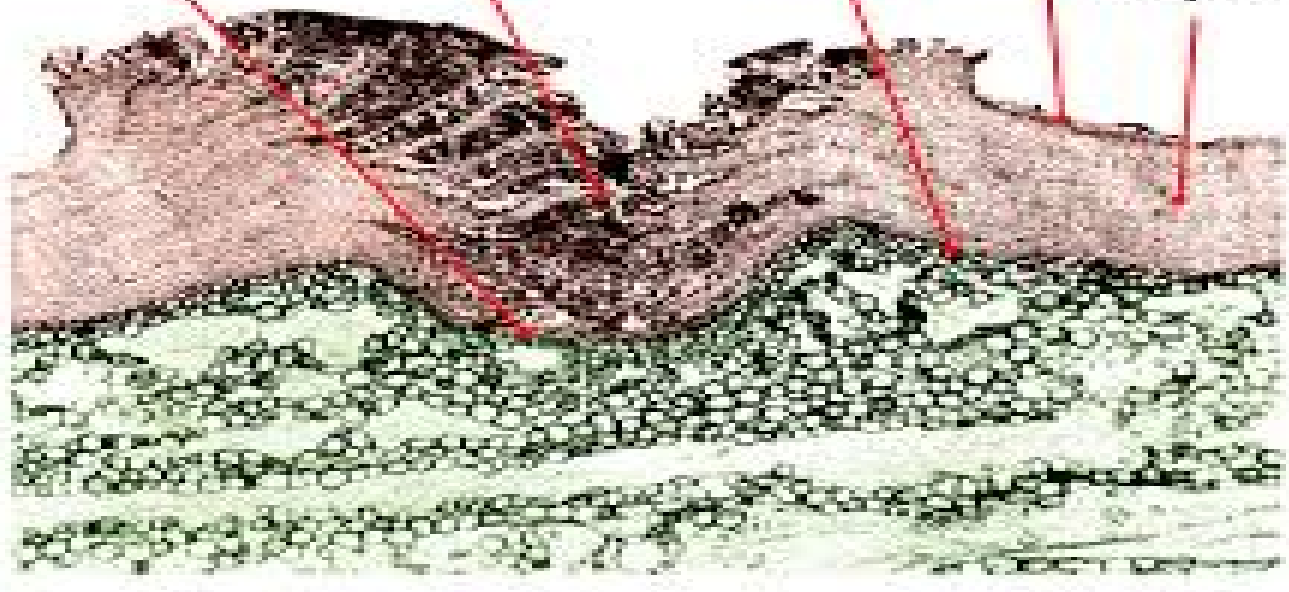
Građa sklerida (sklerenhim)

Pokorično tkivo

паренхимске ћелије
лентицеле

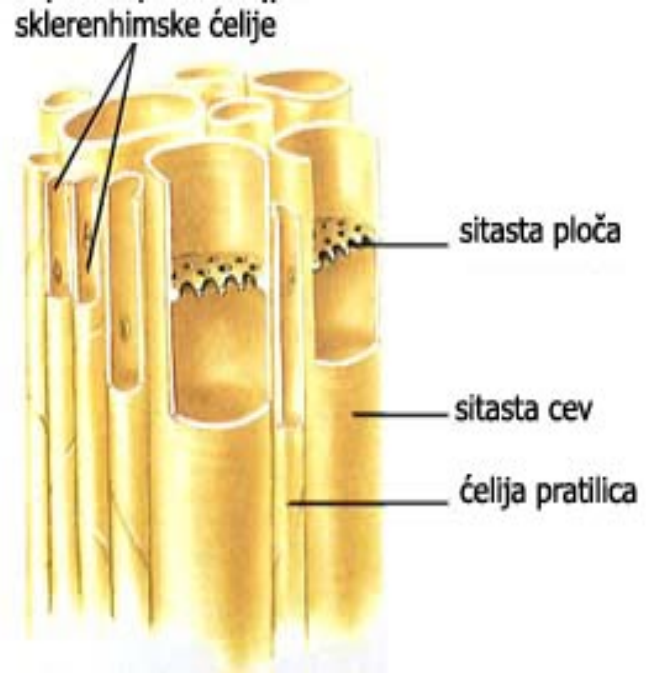
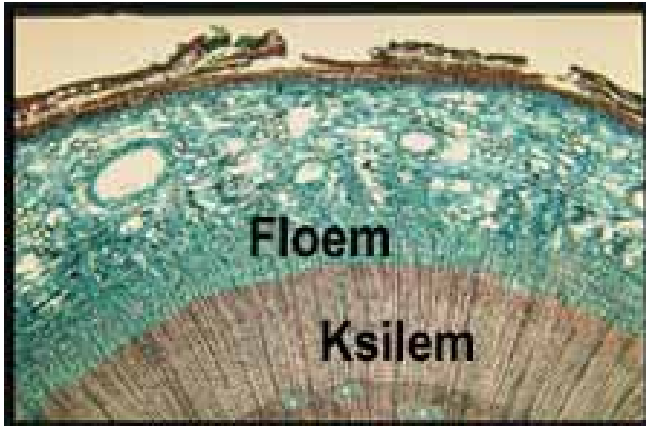
фелоген
лентицеле

фелоген перидерма
епидермис
плута

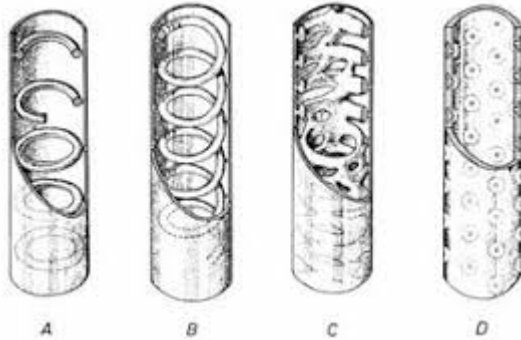


Građa periderma sa lenticelama

Provodna tkiva

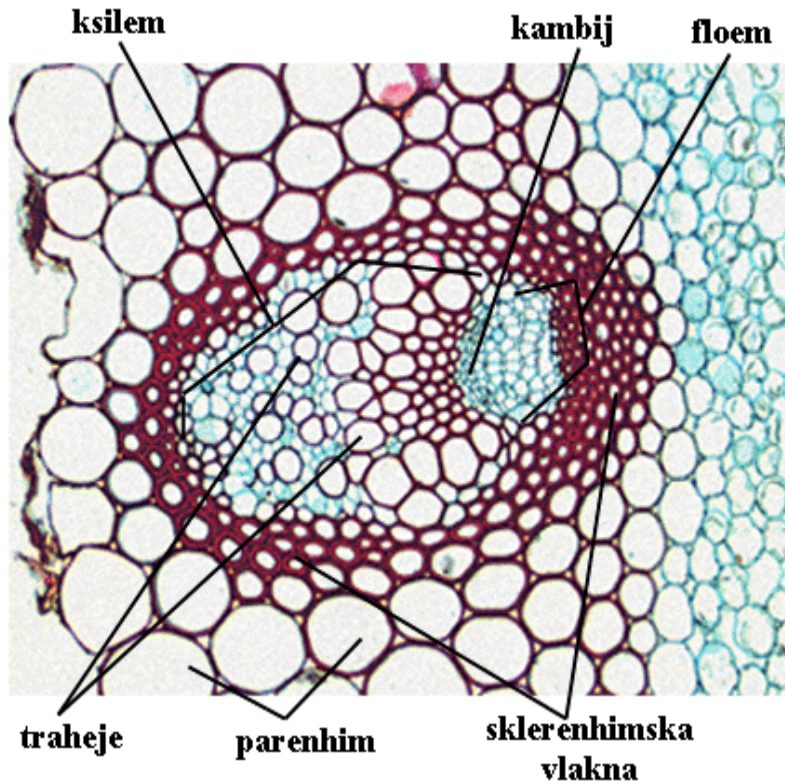


Floem

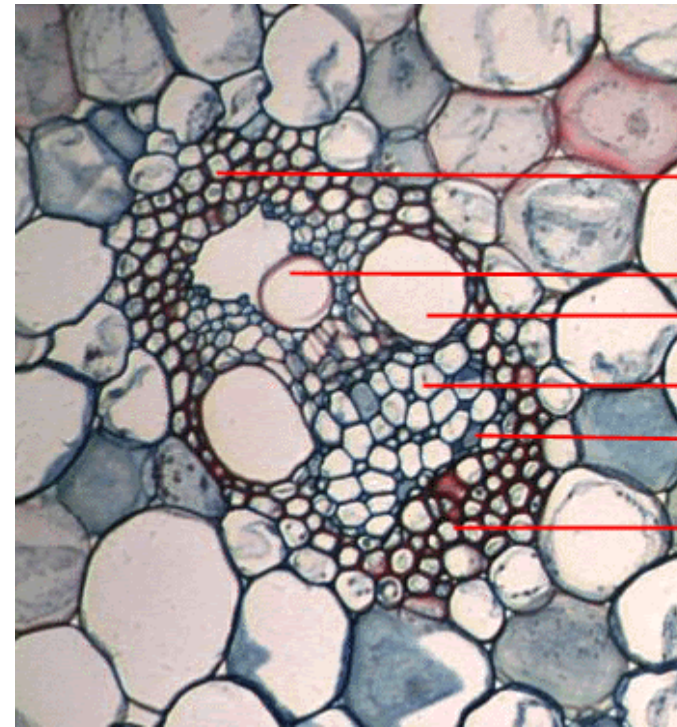


Ksilem

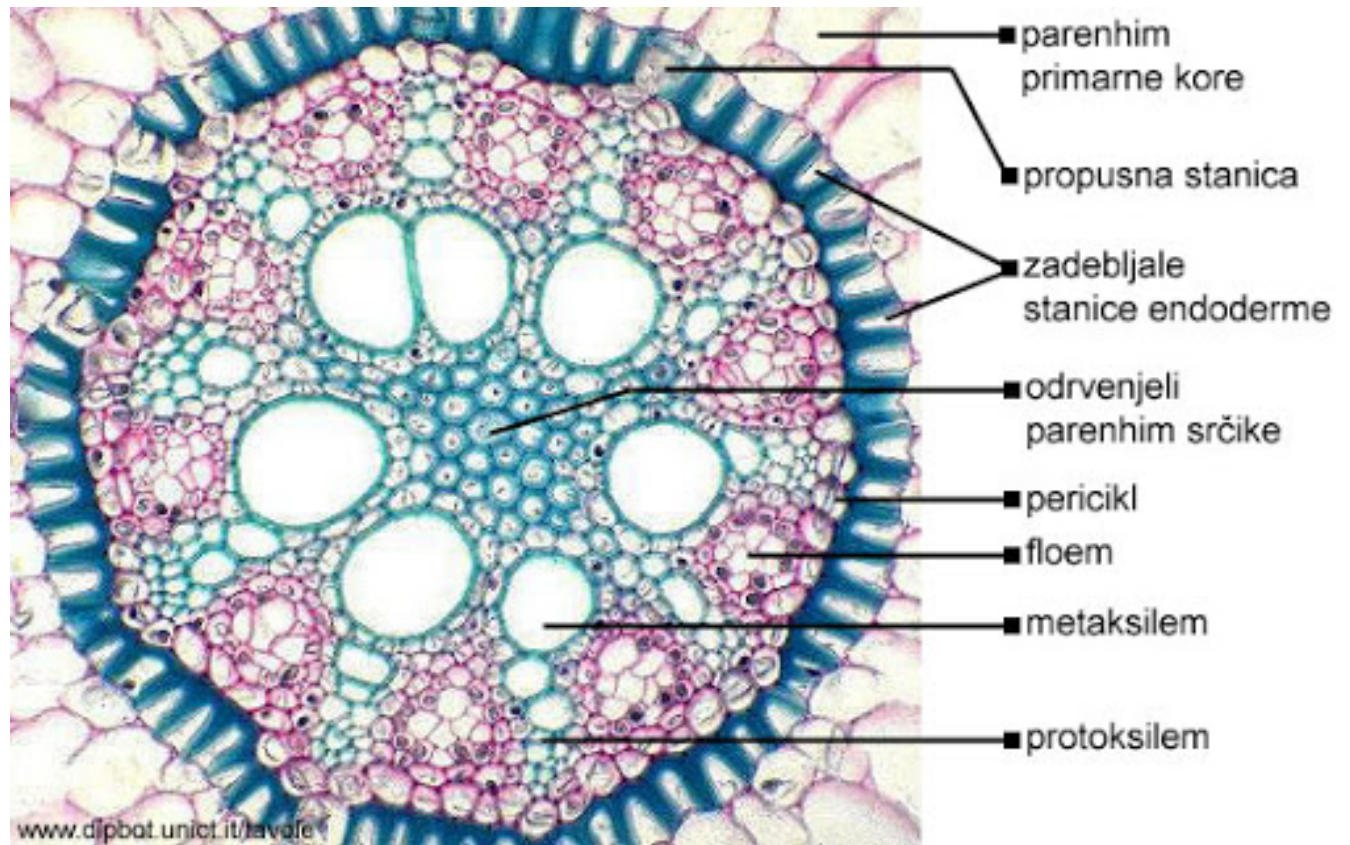
Tipovi provodnih snopića



Otvoreni kolateralni provodni snopić



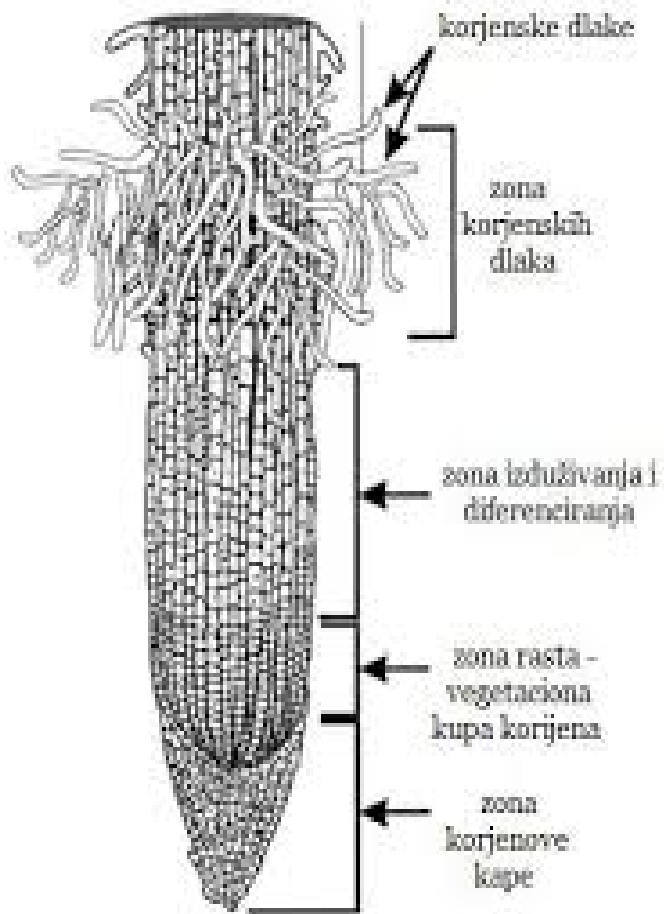
Zatvoreni kolateralni provodni snopić



Radijalni provodni snopić

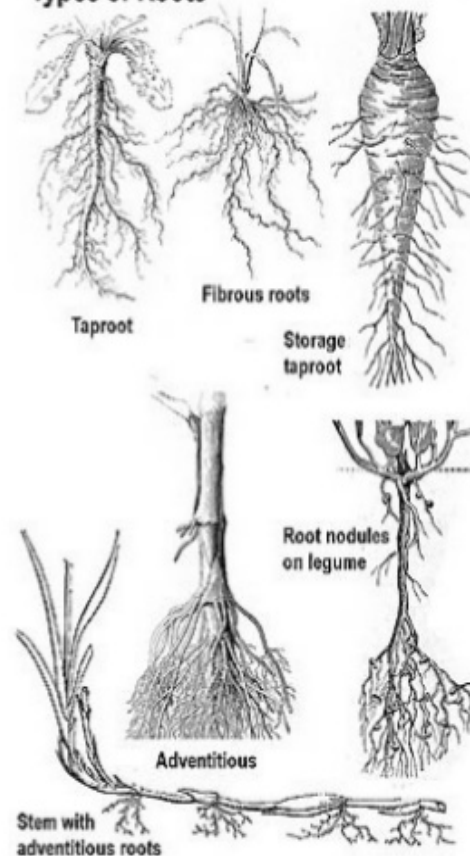
Biljni organi

Vegetativni organi



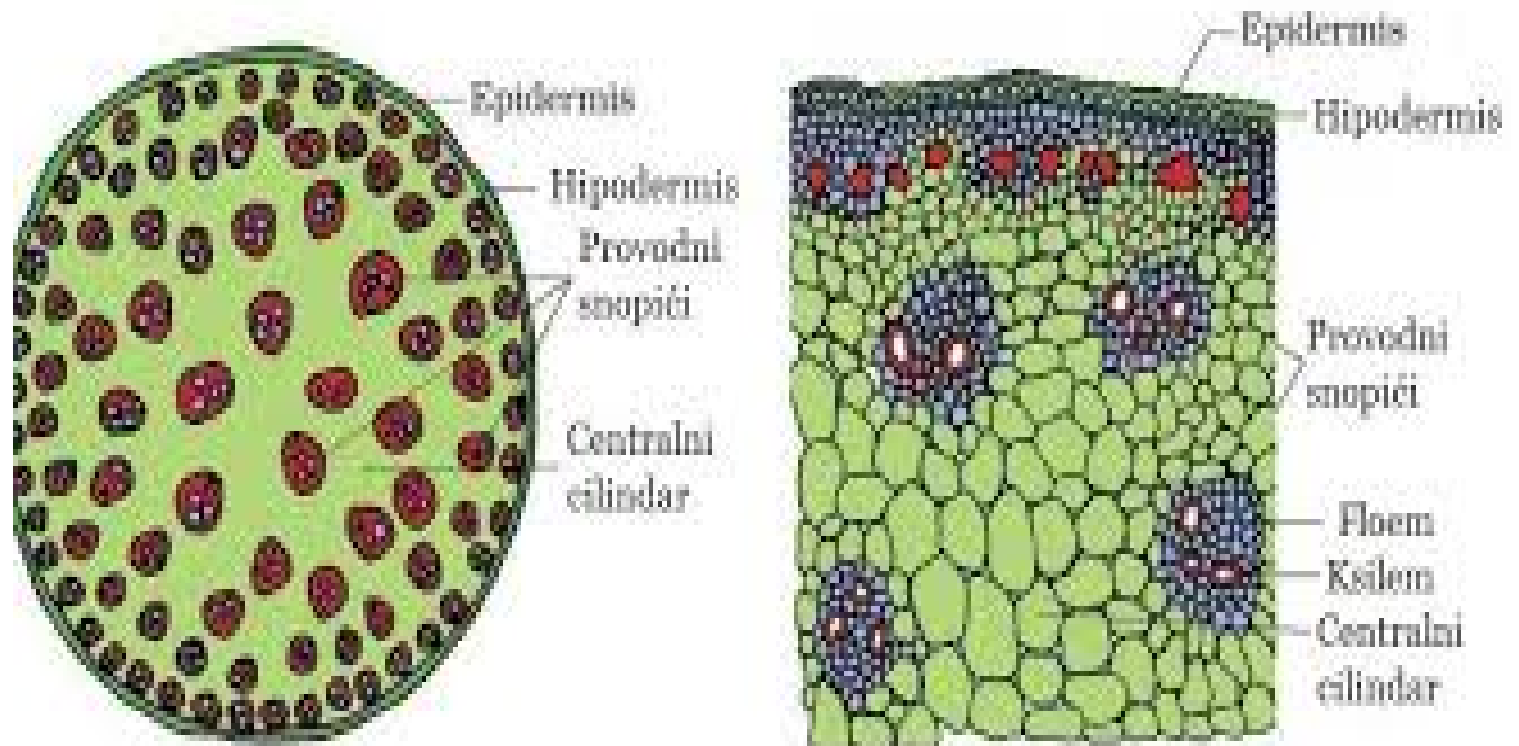
Grada korijena

Types of Roots



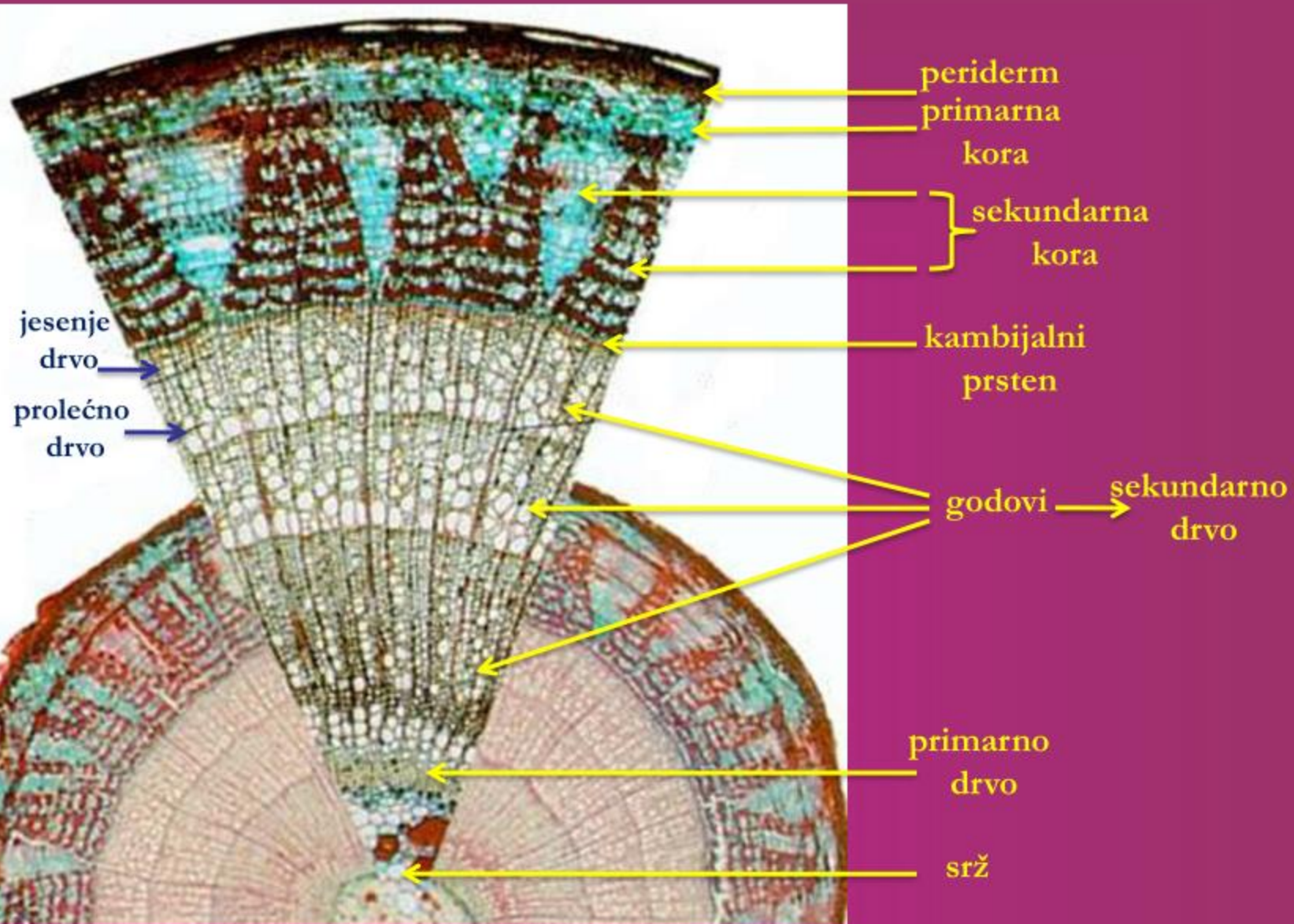
Tipovi korijena

STABLO

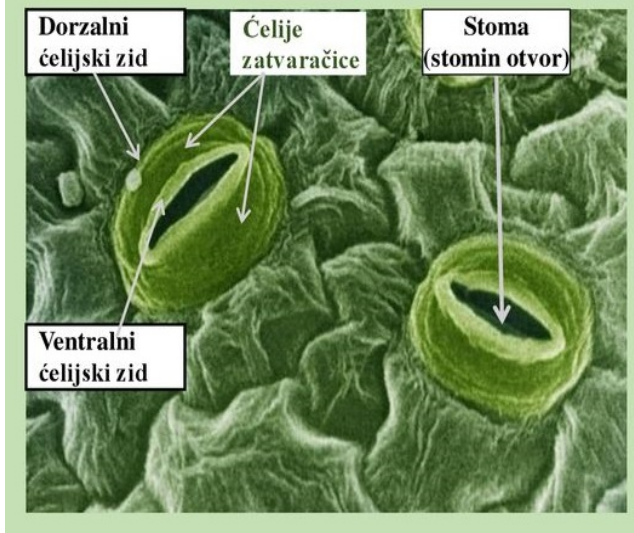
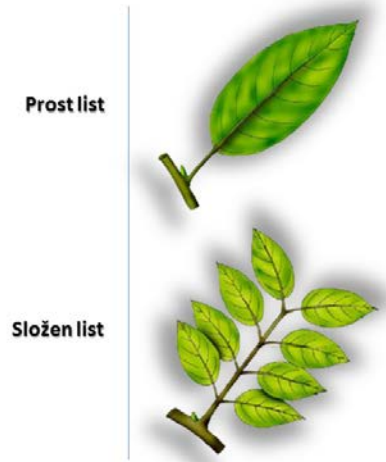
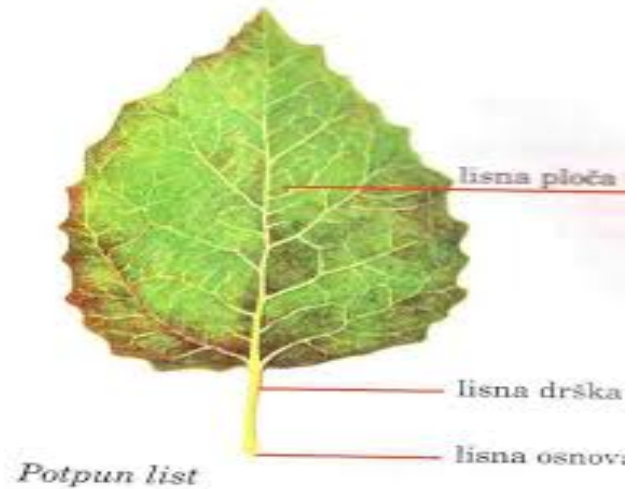
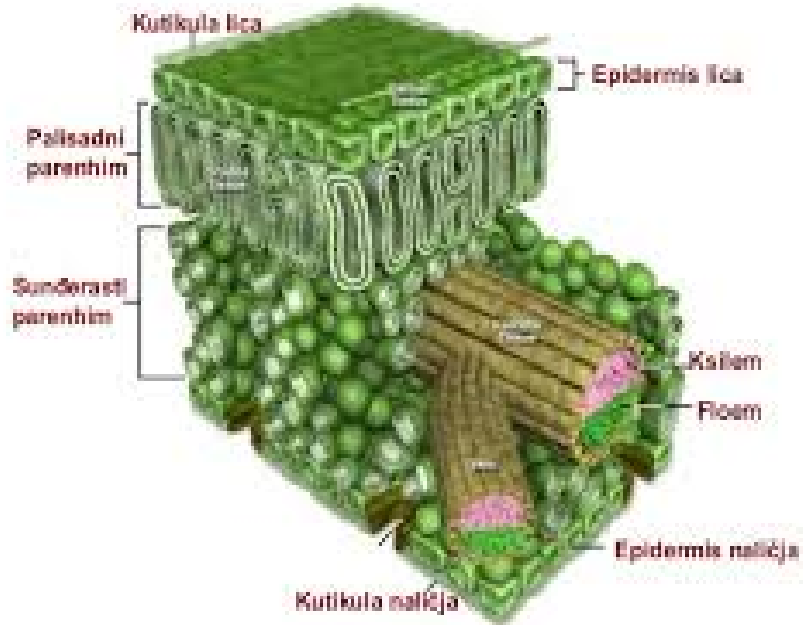


Primarna građa stabla

Sekundarna građa stabla – Tilia tip
Tilia tomentosa (lipa)

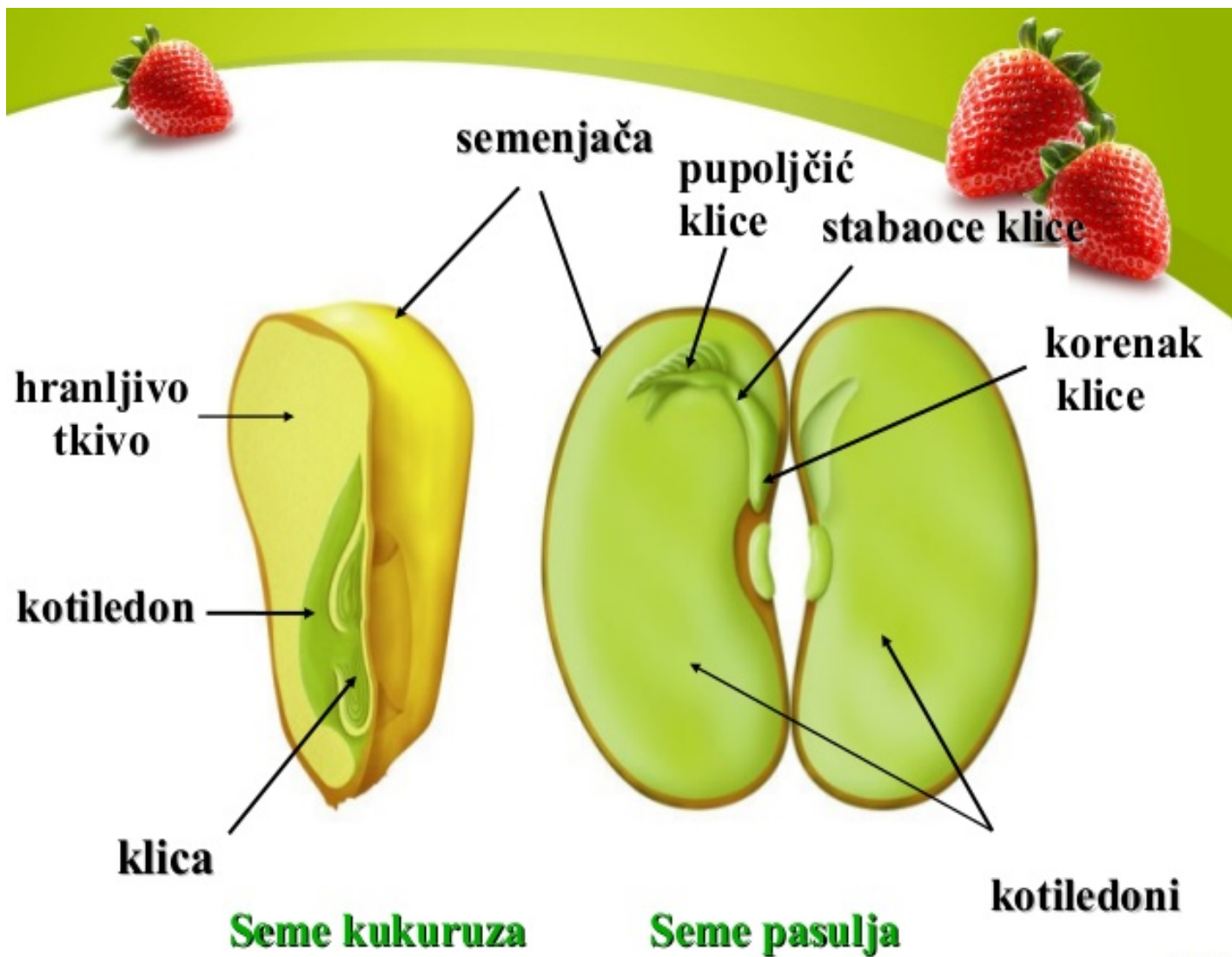


GRADA LISTA



Grada stominog aparata

GENERATIVNI ORGANI

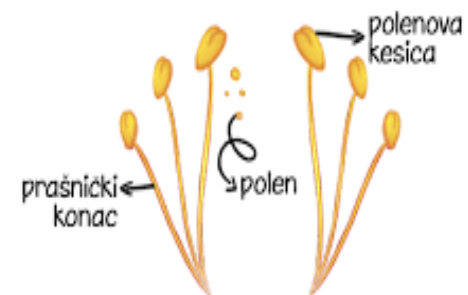


Grada cveta:



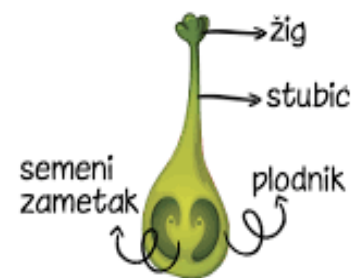
Shtreber

Grada prašnika:



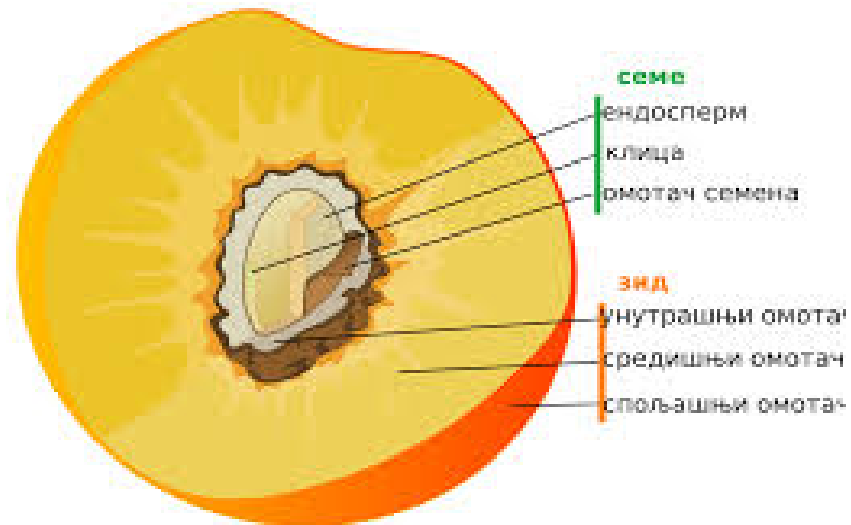
Shtreber

Grada tučka:



Shtreber

Разноврсност плодова



бобица



коштуница



крупa



кyкyрyз



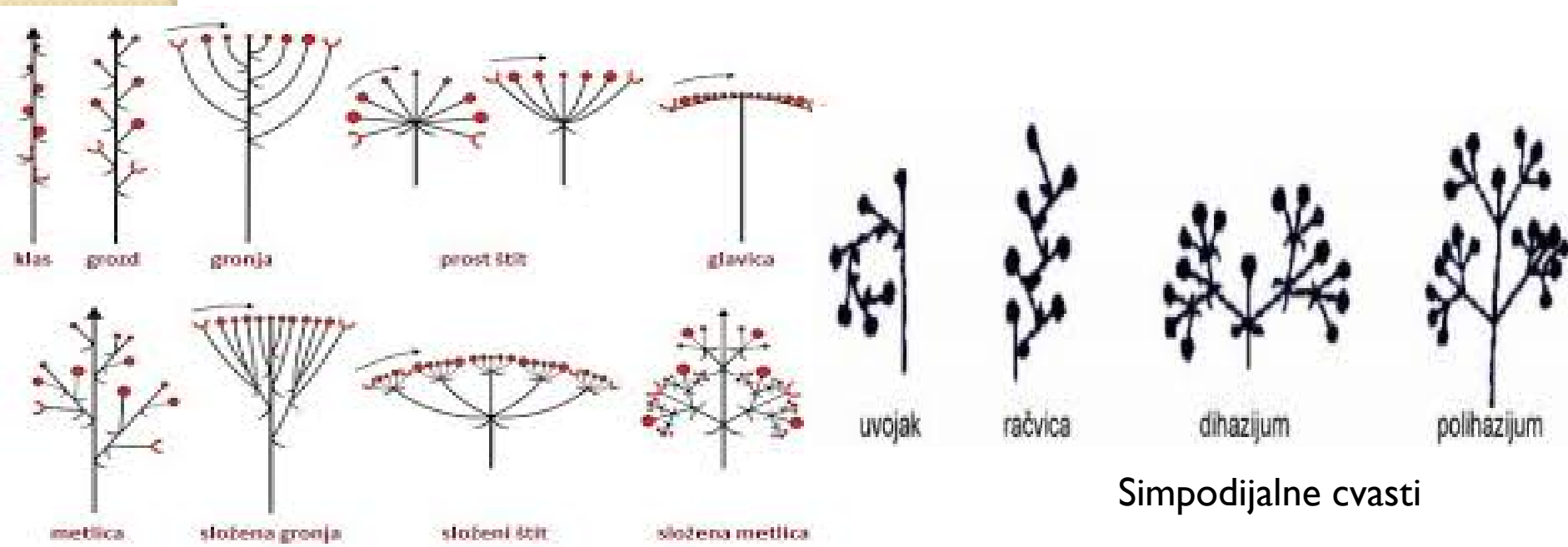
пшеница

орашица



лешник,
бадем, жир,

CVASTI



Simpodijalne cvasti

Monopodijalne (proste i složene)

Цвасти

✓ Грозд, гроња, метлица, штит, сложен штит

